



SAN ANGELO ISD

Long Range Facilities Planning Committee

Meeting 1: Tuesday, September 19, 2017

Agenda

- Welcome & Introductions
- District Overview
- Committee Overview
- Where We Have Been
- 2014 Facility Assessment Overview
- Closing

Introductions

- Name
- Profession / Role in the community
- Number of years in the community
- Children / Grandchildren in the district –
grade and campus
- One Word to Describe San Angelo ISD



SAN ANGELO ISD

Overview of the District

In Pursuit of Excellence

Carl Dethloff, Ph.D., Superintendent

Our Schools

- 24 schools serving more than 14,542 students grades PK-12
- 15:1 student to teacher ratio
- 3 Head Start/ Early Head Start campuses serving over 583 children ages 0-5
- Student population:
 - 58.9% Hispanic
 - 34.1% Anglo
 - 4.1% African American
 - 1% Asian Pacific Islander
 - 0.3% Native American



In Pursuit of Excellence

Learner Profile

Communicator

- Builds positive and productive relationships
- Offers and accepts feedback to grow self and others
- Expresses ideas confidently and creatively in a variety of modes
- Connects globally
- Communicates ideas respectfully and honors the contributions of others

Collaborator/Contributor

- Shares responsibility for collaborative work
- Seeks and evaluates a range of points of view
- Applies learning to transform the world
- Views problems globally
- Invests in continuous community improvement
- Leaves a legacy
- Influences others for positive outcomes

Critical Thinker

- Views problems with a global perspective
- Takes initiative
- Exhibits perseverance and resilience in challenges
- Explores answers beyond the literal
- Applies reflection in self-assessment
- Seeks opportunities to solve problems

Creator

- Asks deep and thoughtful questions
- Challenges existing ways of thinking
- Explores through curiosity and innovation
- Learns from experiences
- Exhibits flexibility and adaptability



SAN ANGELO ISD

Overview of the Committee

Committee Goal

The goal of the Committee is to involve a broad cross-section of San Angelo Independent School District in evaluating current and long-term facility needs.

Committee Membership

- Obtaining different perspectives from the entire community is very important to the process.
- Selected through board member nominations to achieve a diverse cross-section of the SAISD community.

Committee Purpose & Charge

- Consider the educational needs of all students and align with the district's mission, vision and goals.
- Represent the entire community, its values and perceptions in the facility planning process.
- Assess and prioritize the district's current and long-term facility needs, including, but not limited to:
 - Building age, safety and condition
 - District growth and capacity
 - Evolving educational delivery and programs

Committee Purpose & Charge

- Create a long-range plan for the future of the district.
- Bring forward **recommendations** to the Board of Trustees as to how to proceed with a long-range plan.

Committee Process

- District staff members and district consultants will aid the Committee and serve as information providers.
- Dr. Brian May and Dr. Javier Flores will serve as Committee Facilitators, leading each committee meeting and facilitating large group discussion
Facilitators will: keep committee focused and on task, assure all ideas and/or positions are heard, seek to build consensus and will give formal presentation to Board of Trustees with the committee's final recommendations.

Committee Schedule

All committee meetings will be held from 11:30 am - 1:00 pm:

- Meeting 1: Tuesday, September 19
- Meeting 2: Tuesday, October 3 – West Texas Rehab Training Center
- Meeting 3: Tuesday, October 24 – San Angelo ISD – Board Room

**Facility Tours: Thursday, Nov 2 at 5:30 pm - 8:30 pm &
Saturday, Nov 4 at 9:00 am – 12:00 pm**

- Meeting 4: Tuesday, November 14
- Meeting 5: Tuesday, December 12
- Meeting 6: Tuesday, January 9
- *Meeting 7: Tuesday, January 16 (if needed)*
- Recommendations to the Board of Trustees:
Monday, January 22, 2018

Committee Process

In the upcoming meetings, the committee will engage in discussion around the following topics:

- Existing Facility Conditions
- Facility Needs
- School Finance
- Potential Solutions & Cost Analysis
- Community Survey



SAN ANGELO ISD

Where We Have Been

Dr. Jeff Bright, Asst. Superintendent of Business Support Services

Historical Timeline

DEMOGRAPHIC STUDY

FACILITY ADISORY
TASK FORCE - DR.
OATES

HUCKABEE FACILITY
ASSESSMENT

FAILED BOND

BOND PLANNING
COMMITTEE
REORGANIZED

\$117 MILLION BOND
PASSES (11
CAMPUSES)

BOND WORK
COMPLETED

FACILITY ASSESSMENT
UPDATED 2014 -
ADDRESSING
IDENTIFIED NEEDS

2005

2005

2006

2007

2007

2008

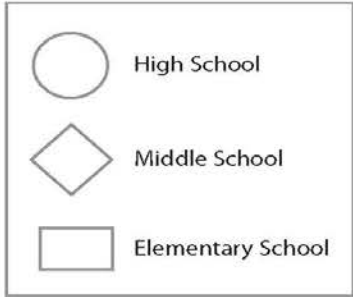
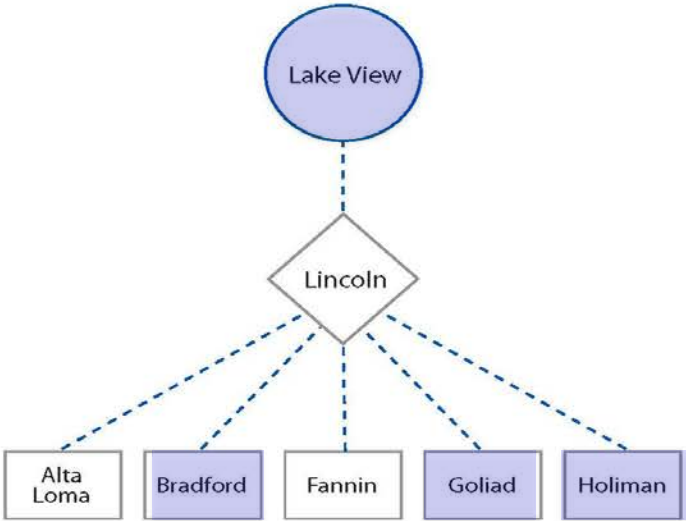
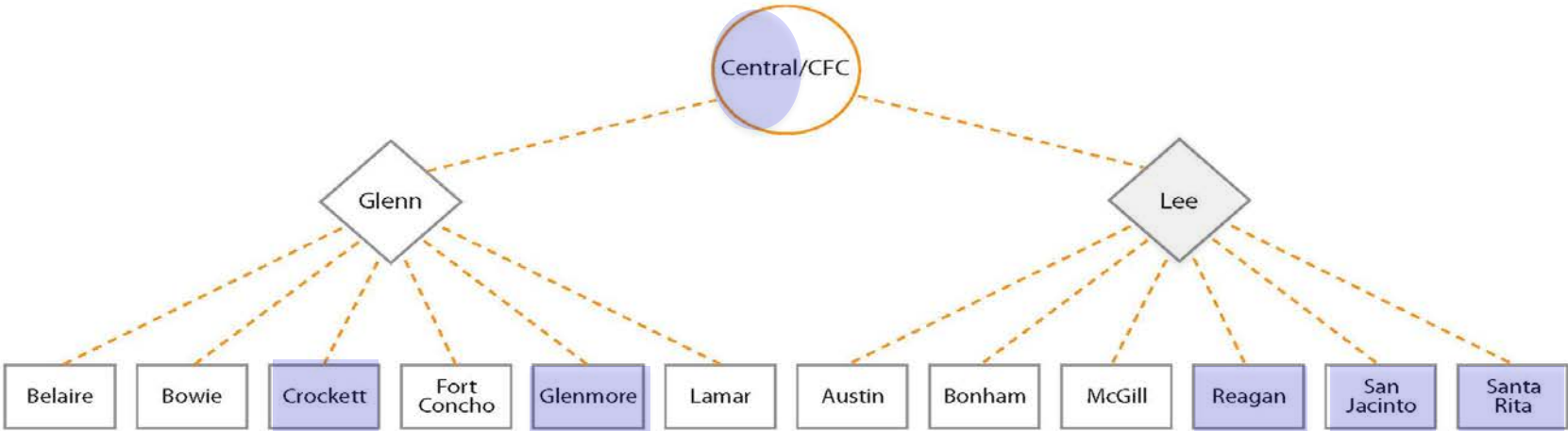
2013

2014-2017

Existing Facilities

- **17 elementary schools (PK-5 and K-5)**
- **3 middle schools (6-8)**
- **1 freshman campus**
- **1 6A high school (10-12) and 1 5A high school (9-12)**
- **1 alternative campus**
- **3 Head Start/Early Head Start**
- **PAYS**
- **Support Facilities:**
 - Administration Building
 - Food Services Warehouse
 - Maintenance Facility
 - Sam Houston Special Education Offices
 - San Angelo Stadium
 - Transportation Facility

2008 Bond Projects



2008 Bond Projects

- The \$117 million bond impacted 11 campuses and addressed:
 - Repairs/Renovations and some new construction
 - Code compliance: ADA, mechanical, electrical, and plumbing

All 2008 bond projects were completed in 2013 on time and UNDER budget.

Other Capital Improvements

Since the end of the 2008 bond program, the district has completed over \$30 million worth of additional projects utilizing our fund balance monies.





SAN ANGELO ISD

**Long Range Planning and the 2014 Facility
Assessment Overview**

Dr. Jeff Bright, Asst. Superintendent of Business Support Services

Long-Range Planning Drivers

AGING

- Facility Assessment—
Repair + Replacement
- Preventive / Deferred
Maintenance

EVOLVING

- Facility Assessment—
Code Compliance
- Guiding Documents—
Instructional Delivery

GROWTH

- Demographics Report—
Student Enrollment
- Technology +
Transportation Plans

2014 Facility Assessment

October 13, 2014

Huckabee

FACILITY
VOLUME
SAN ANGELO

This document is release for the purpose of
10.306 on October 13, 2014. This document

Bradford Elementary School CAMPUS DATA



BRADFORD ELEMENTARY SCHOOL 1202 East 22nd, San Angelo TX 76903

Year Built	1930
Additions	1940, 1947, 1999, 2010
No. of Buildings	10
No. of Portables	0
Approx. Total Square Footage	63,063
Grades Served	Pre K – 5 th
Current Enrollment	506
Building Levels	1



Facility Assessment Process

- Americans with Disabilities Act (ADA) Issues
- Mechanical Systems
- Life Safety/Building Code Issues
- Technology & Security Issues
- Age of Building Systems

Facility Assessment

- Facility Standards
 - District Technical & Educational Specifications

The assessment leads to possible solutions and cost estimates for meeting our Long Range Needs



SAN ANGELO ISD

Closing

All meeting information, materials and resources will be posted to the LRFPC website at: SAISDPlanningCommittee.org

Homework!

1. Sign up for Facility Tours
2. Review 2008 Bond Projects

Thank You! Questions?

Next Meeting:
Tuesday, October 3, 2017
11:30 a.m.
West Texas Rehab Center